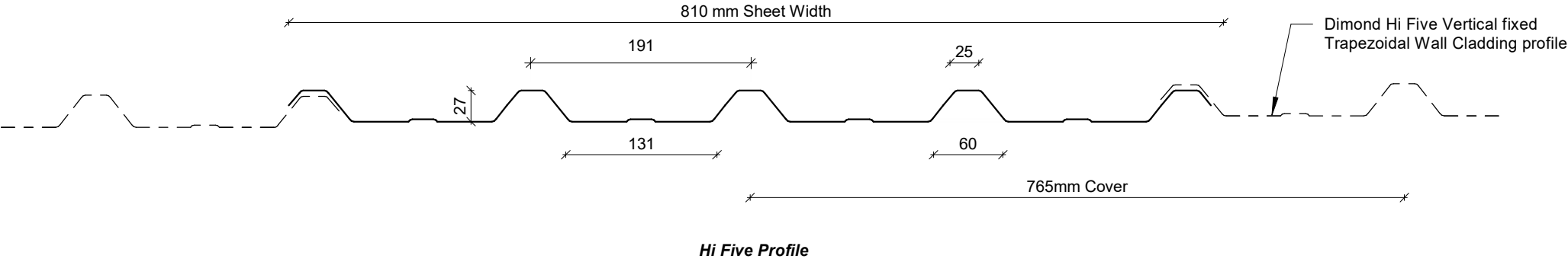


# HI FIVE

## RESIDENTIAL VERTICAL WALL CLADDING

DETAILS:		REV:	DATE:
HFVC00	Cover Sheet	1	Jun 2025
HFVC01	Profile Summary	1	Jun 2025
HFVC02	Typical Flashing Detail	1	Jun 2025
HFVC03	Barge Flashing Detail	1	Jun 2025
HFVC04	Transverse Junction Detail	1	Jun 2025
HFVC05	External Corner Detail	1	Jun 2025
HFVC06	Internal Corner Detail	1	Jun 2025
HFVC07	Base Detail	1	Jun 2025
HFVC08	Soffit Detail	1	Jun 2025
HFVC09	Window Head Detail	1	Jun 2025
HFVC10	Window Jamb Detail	1	Jun 2025
HFVC11	Window Sill Detail	1	Jun 2025
HFVC12	Meterbox Head Detail	1	Jun 2025
HFVC13	Meterbox Jamb Detail	1	Jun 2025
HFVC14	Meterbox Sill Detail	1	Jun 2025
HFVC15	Pipe Penetration Detail	1	Jun 2025
HFVC16	Cladding to Concrete Junction Detail	1	Jun 2025
HFVC17	Cladding to Brick Junction Detail	1	Jun 2025
HFVC18	Cladding to Panel Junction Detail	1	Jun 2025
HFVC19	3D Window Flashing Detail	1	Jun 2025

PROFILE OVERVIEW	
MINIMUM PITCH	3°
RIB TYPE	Low
RIBS PER SHEET	5 Ribs per sheet
WIDTH	765mm Cover, 810mm Sheet



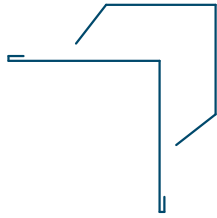
Profile Summary



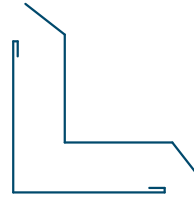
©Dimond 2023, all rights reserved. The information and specifications contained in this document are proprietary to Dimond and may not be used other than for the purpose of designing or building a roof or roofing system solely using products supplied or approved by Dimond ("Permitted Purpose"). You may copy this document solely for the Permitted Purpose, but may not otherwise copy, publish, distribute or modify this document without Dimond's prior written consent. Dimond will not be liable for any use of this document or information and specifications contained in this document, other than for the Permitted Purpose

Rev: 1    **Hi Five   Residential Vertical Cladding**

Date: Jun 2025   Scale: 1 : 5   Sheet: **HFVC01**



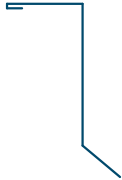
**External Corner Flashing**



**Internal Corner Flashing**



**Base Flashing**



**Soffit Flashing**



**Window Head Flashing**



**Window Jamb Flashing**

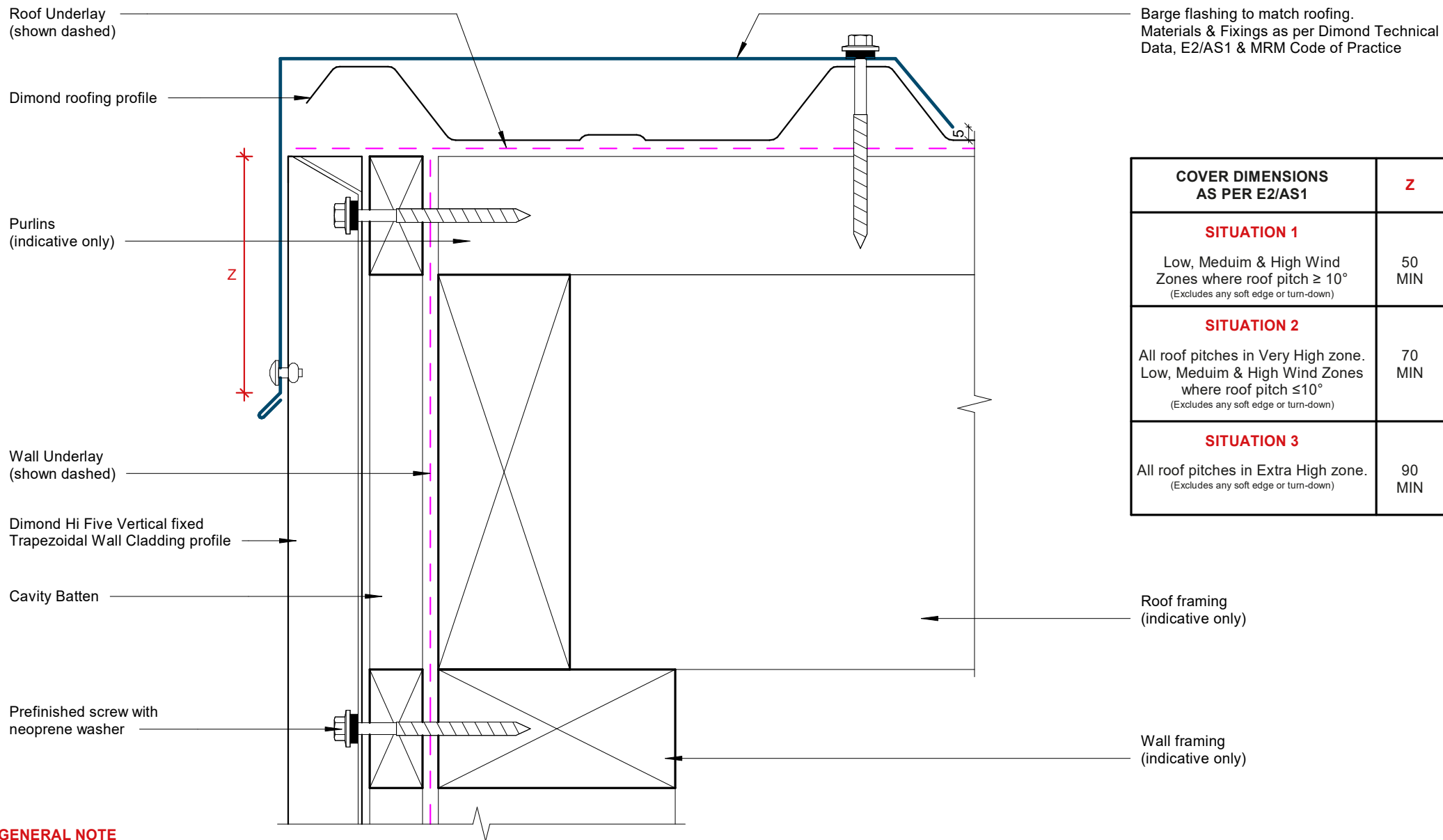


**Window Sill Flashing**



**Transverse Flashing**

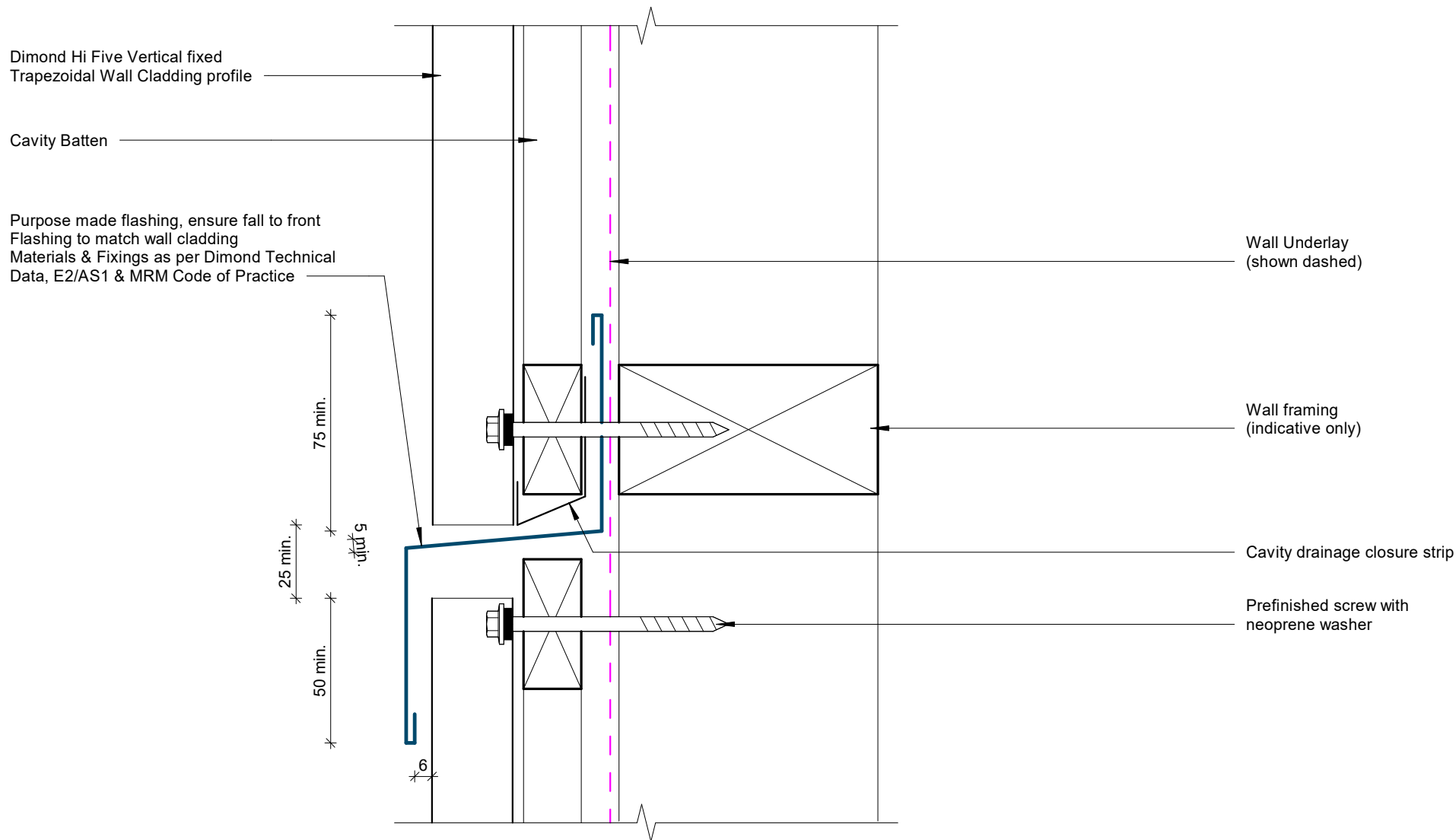
## Typical Flashing Detail



#### GENERAL NOTE

Cavity battens or timber framing that contain copper must be separated from steel cladding by a strip of wall or roof underlay or DPC.

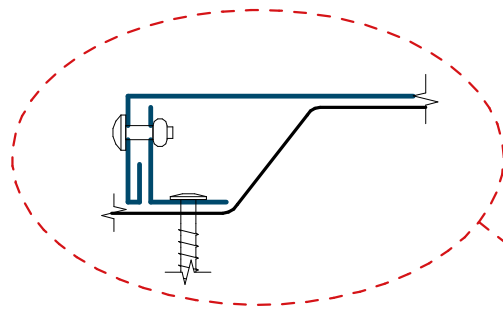
## Barge Flashing Detail



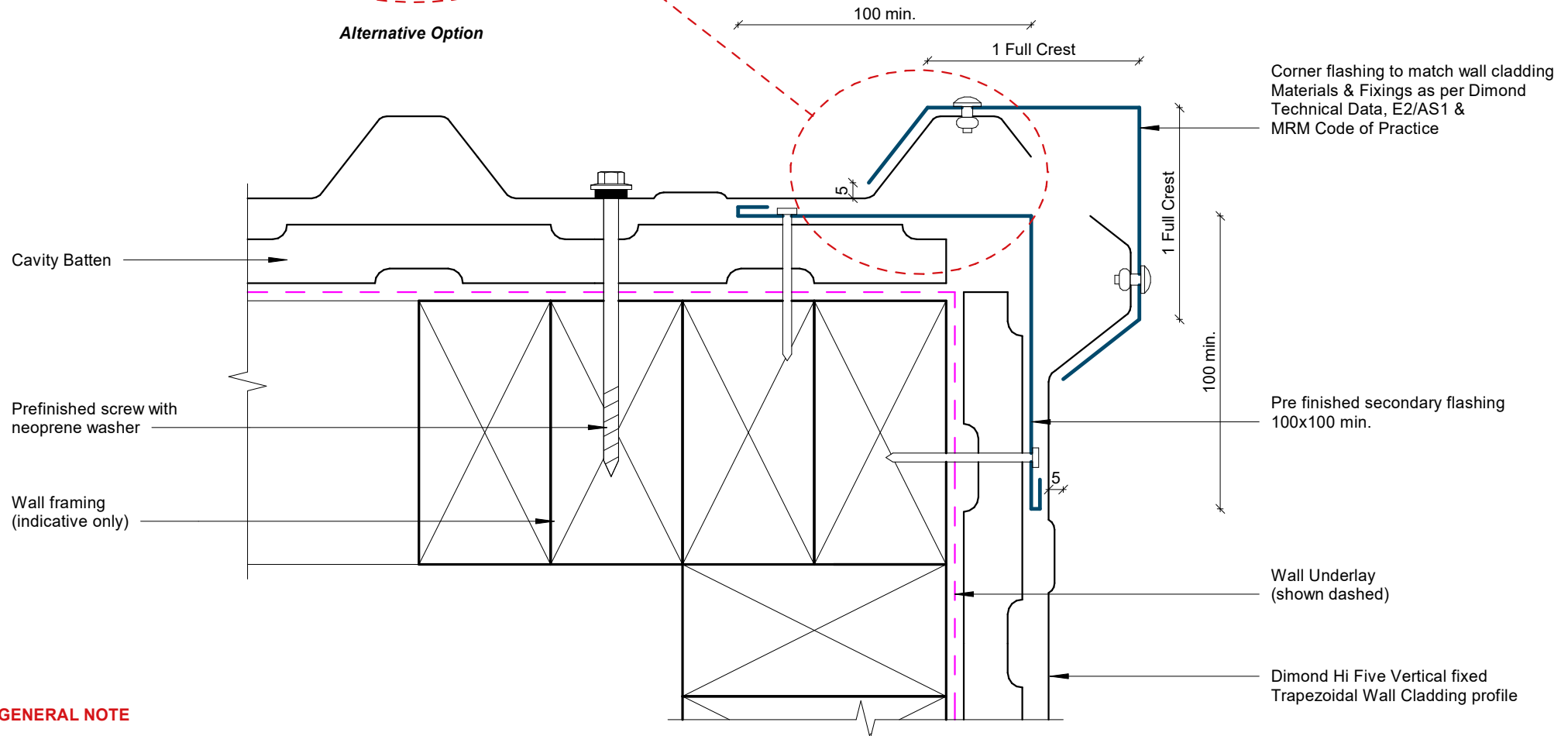
#### GENERAL NOTE

Cavity battens or timber framing that contain copper must be separated from steel cladding by a strip of wall or roof underlay or DPC.

## Transverse Junction Detail



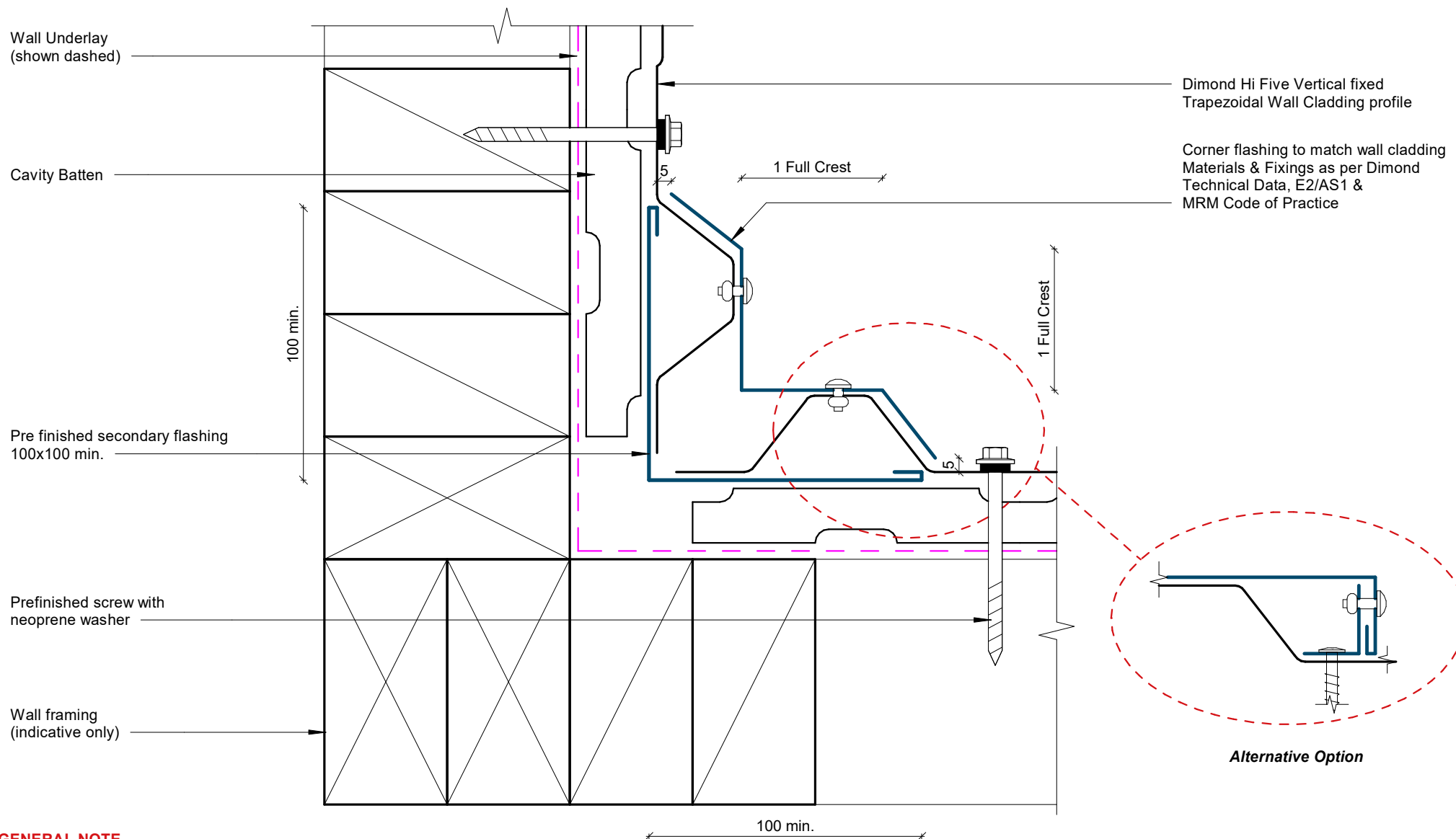
**Alternative Option**



**GENERAL NOTE**

Cavity battens or timber framing that contain copper must be separated from steel cladding by a strip of wall or roof underlay or DPC.

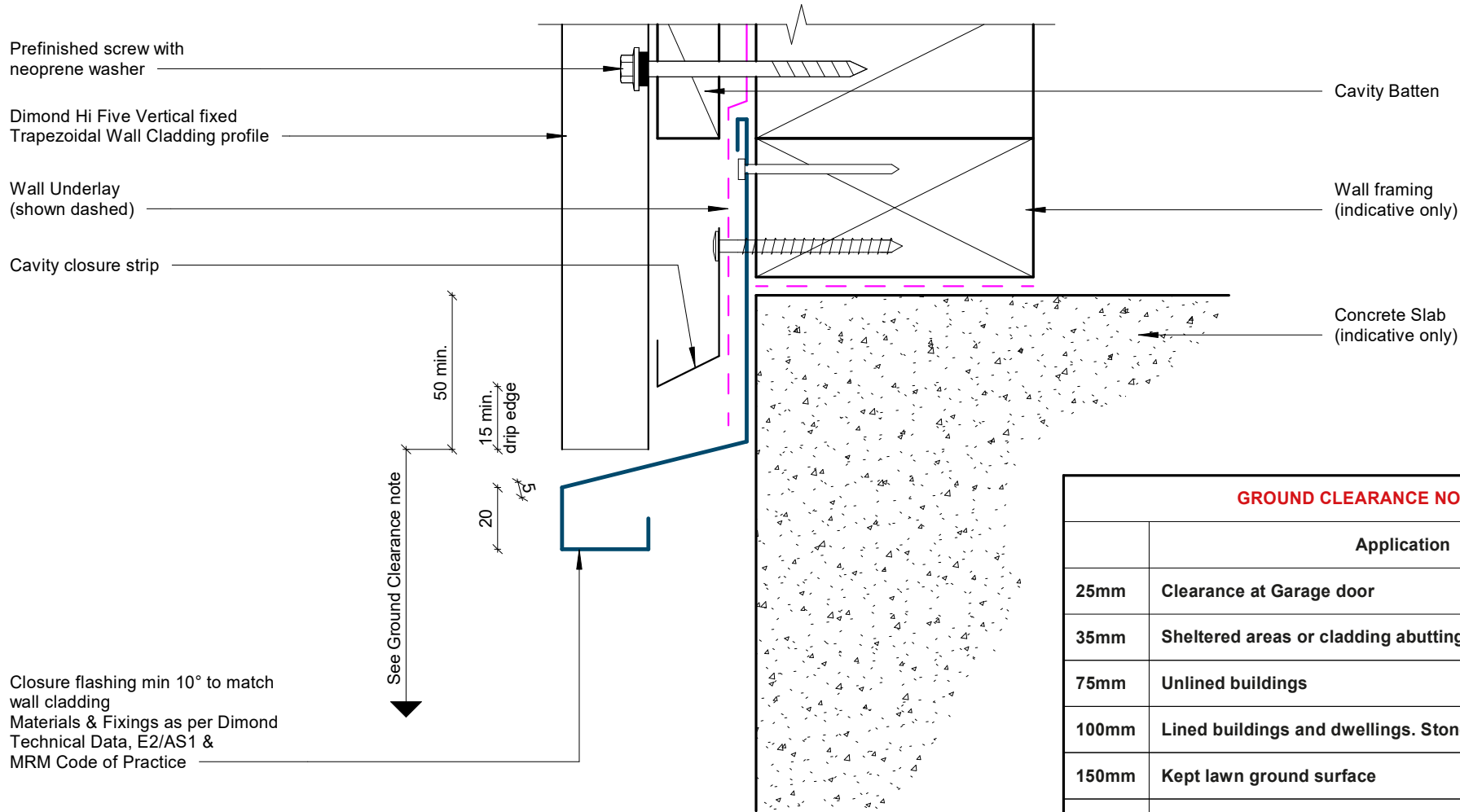
## External Corner Detail



#### GENERAL NOTE

Cavity battens or timber framing that contain copper must be separated from steel cladding by a strip of wall or roof underlay or DPC.

## Internal Corner Detail



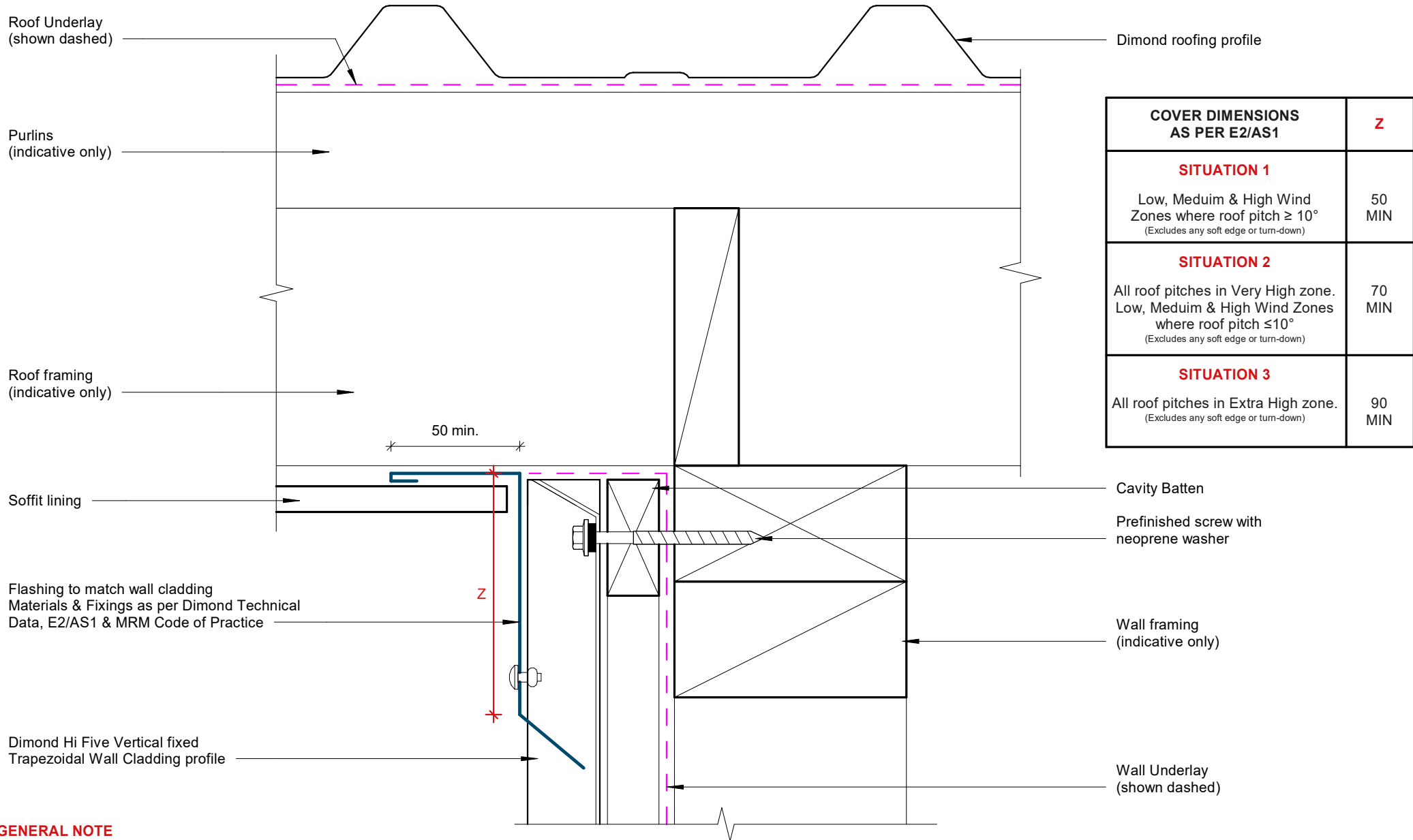
GROUND CLEARANCE NOTE	
	Application
25mm	Clearance at Garage door
35mm	Sheltered areas or cladding abutting a deck
75mm	Unlined buildings
100mm	Lined buildings and dwellings. Stone chip ground surface
150mm	Kept lawn ground surface
175mm	Pasture ground surface

**GENERAL NOTE**

Cavity battens or timber framing that contain copper must be separated from steel cladding by a strip of wall or roof underlay or DPC.

# Base Detail





#### GENERAL NOTE

Cavity battens or timber framing that contain copper must be separated from steel cladding by a strip of wall or roof underlay or DPC.

## Soffit Detail

Additional wrap & flashing tape over head flashing  
(shown dashed)

Cavity Batten

Prefinished screw with  
neoprene washer

Dimond Hi Five Vertical fixed  
Trapezoidal Wall Cladding profile

Cavity closure strip

Purpose made head flashing min 15° fall to top  
Flashing to match wall cladding  
Materials & Fixings as per Dimond Technical  
Data, E2/AS1 & MRM Code of Practice

Sealant used for very high  
wind zones and above

Line of jamb flashing behind

Wall Underlay  
(shown dashed)

Wall framing  
(indicative only)

Wall lining  
(indicative only)

15 min.  
drip edge

50 min.

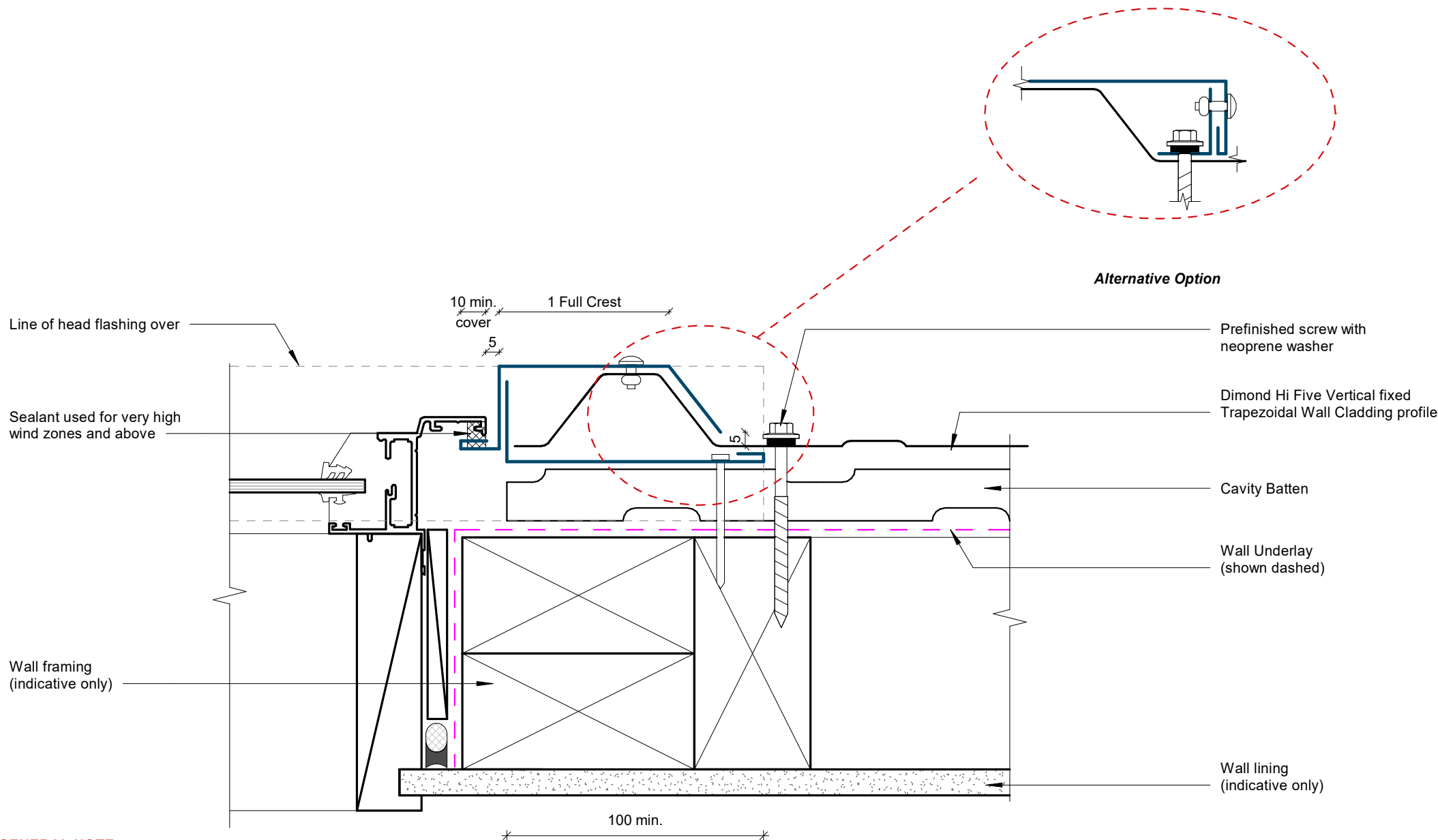
10 min  
cover

75 min.

## GENERAL NOTE

Cavity battens or timber framing that contain copper must be separated from steel cladding by a strip of wall or roof underlay or DPC.

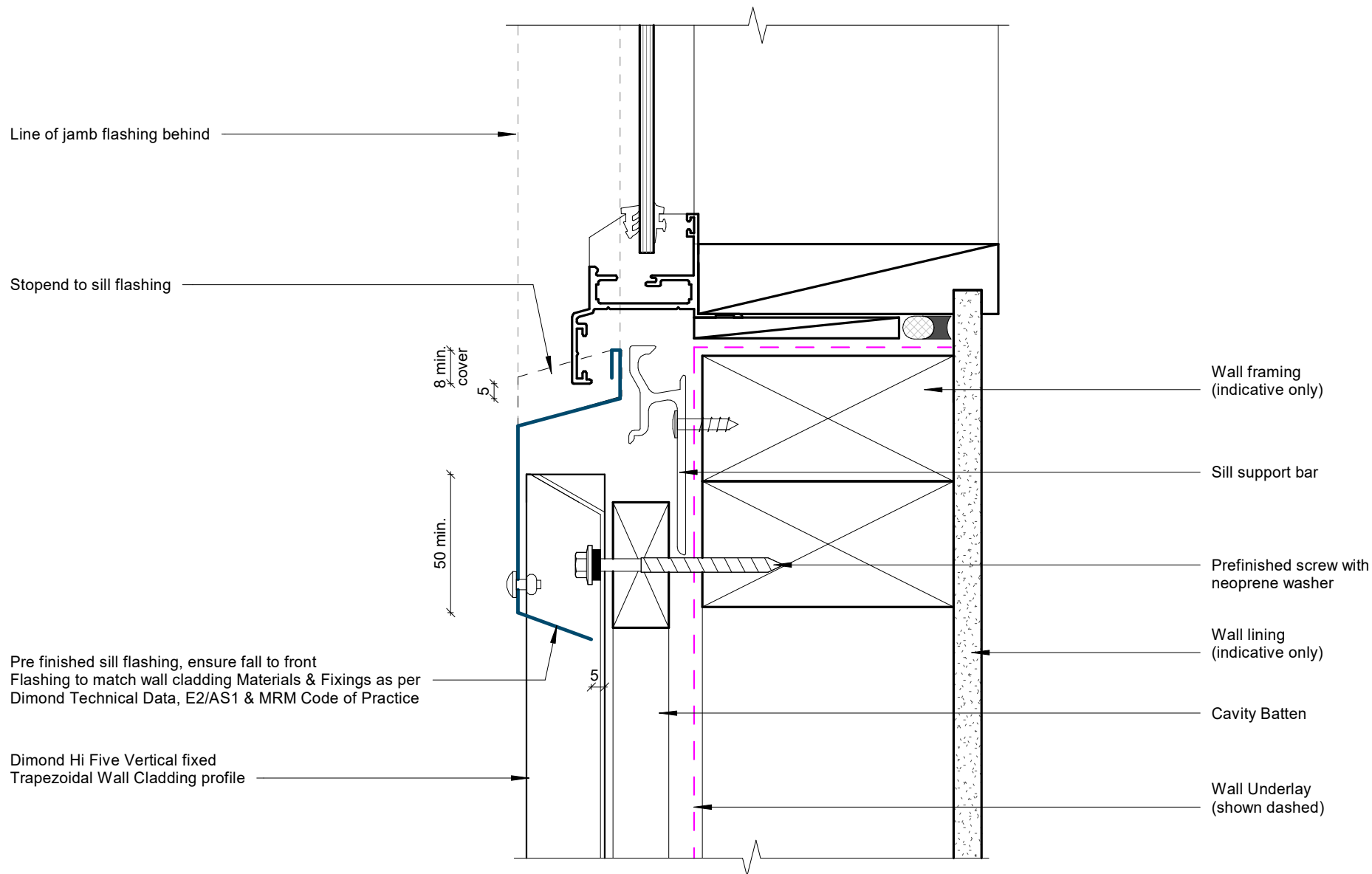
# Window Head Detail



#### GENERAL NOTE

Cavity battens or timber framing that contain copper must be separated from steel cladding by a strip of wall or roof underlay or DPC.

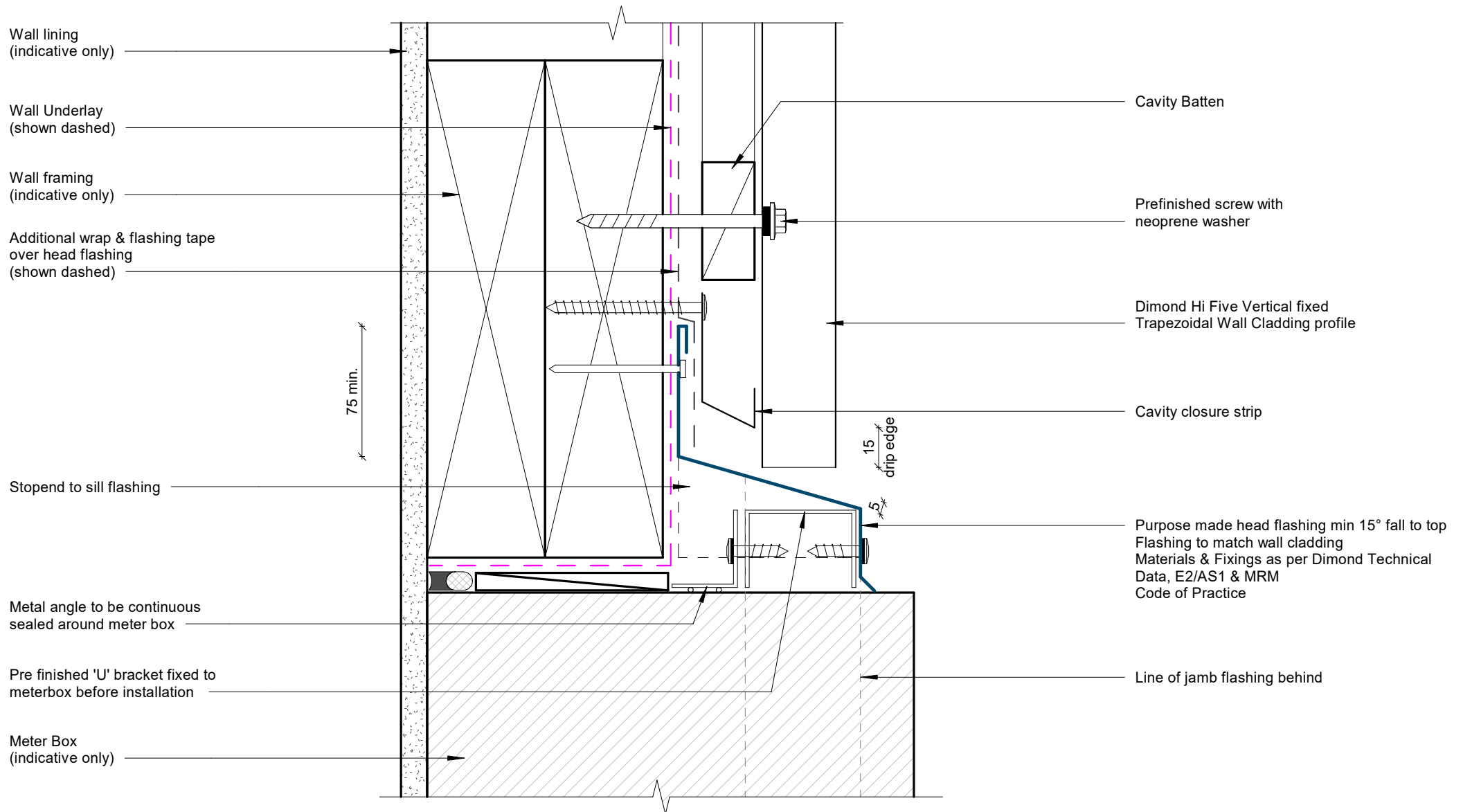
## Window Jamb Detail



#### GENERAL NOTE

Cavity battens or timber framing that contain copper must be separated from steel cladding by a strip of wall or roof underlay or DPC.

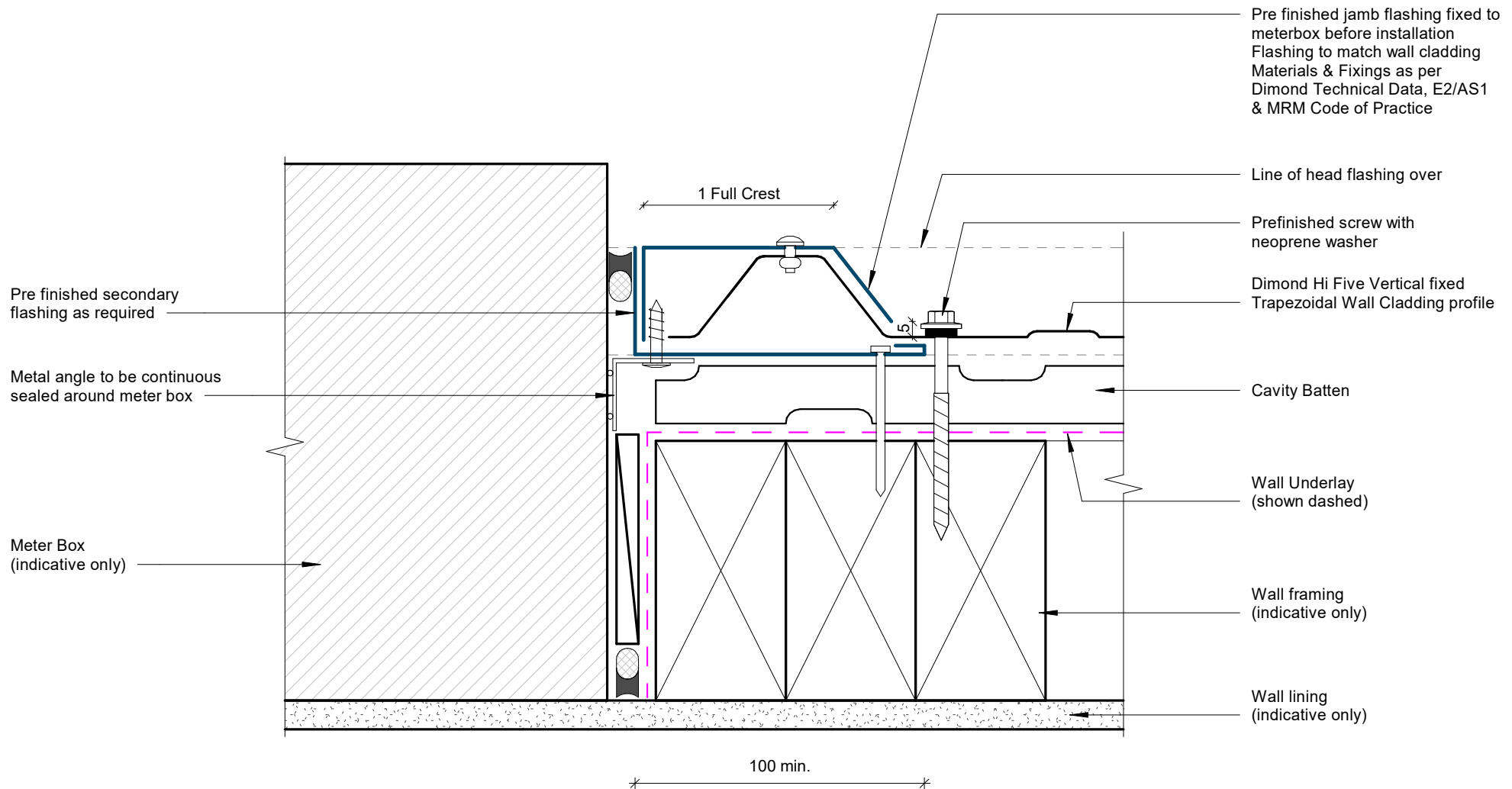
## Window Sill Detail



#### GENERAL NOTE

Cavity battens or timber framing that contain copper must be separated from steel cladding by a strip of wall or roof underlay or DPC.

## Meterbox Head Detail

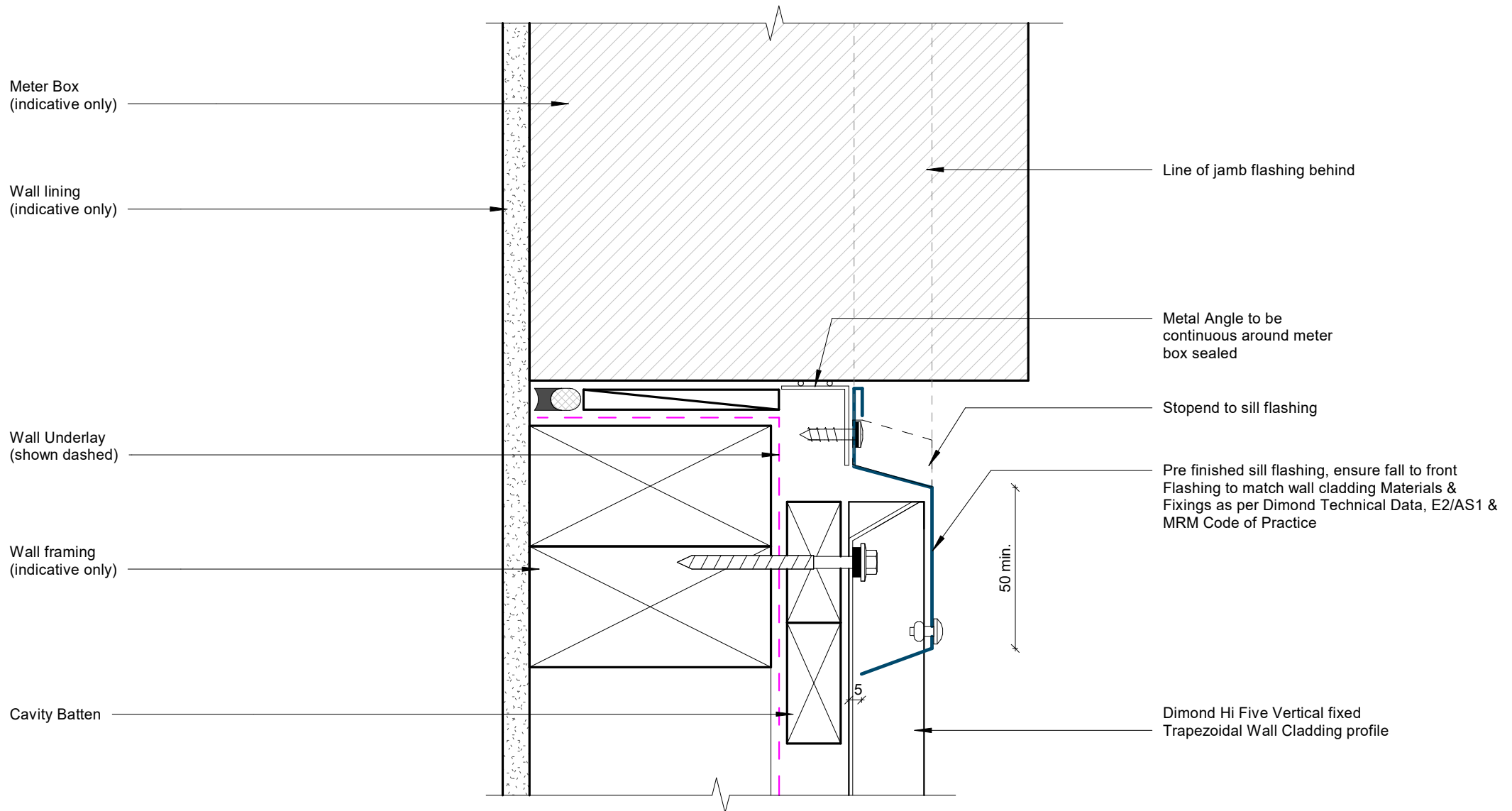


#### GENERAL NOTE

Cavity battens or timber framing that contain copper must be separated from steel cladding by a strip of wall or roof underlay or DPC.

## Meterbox Jamb Detail

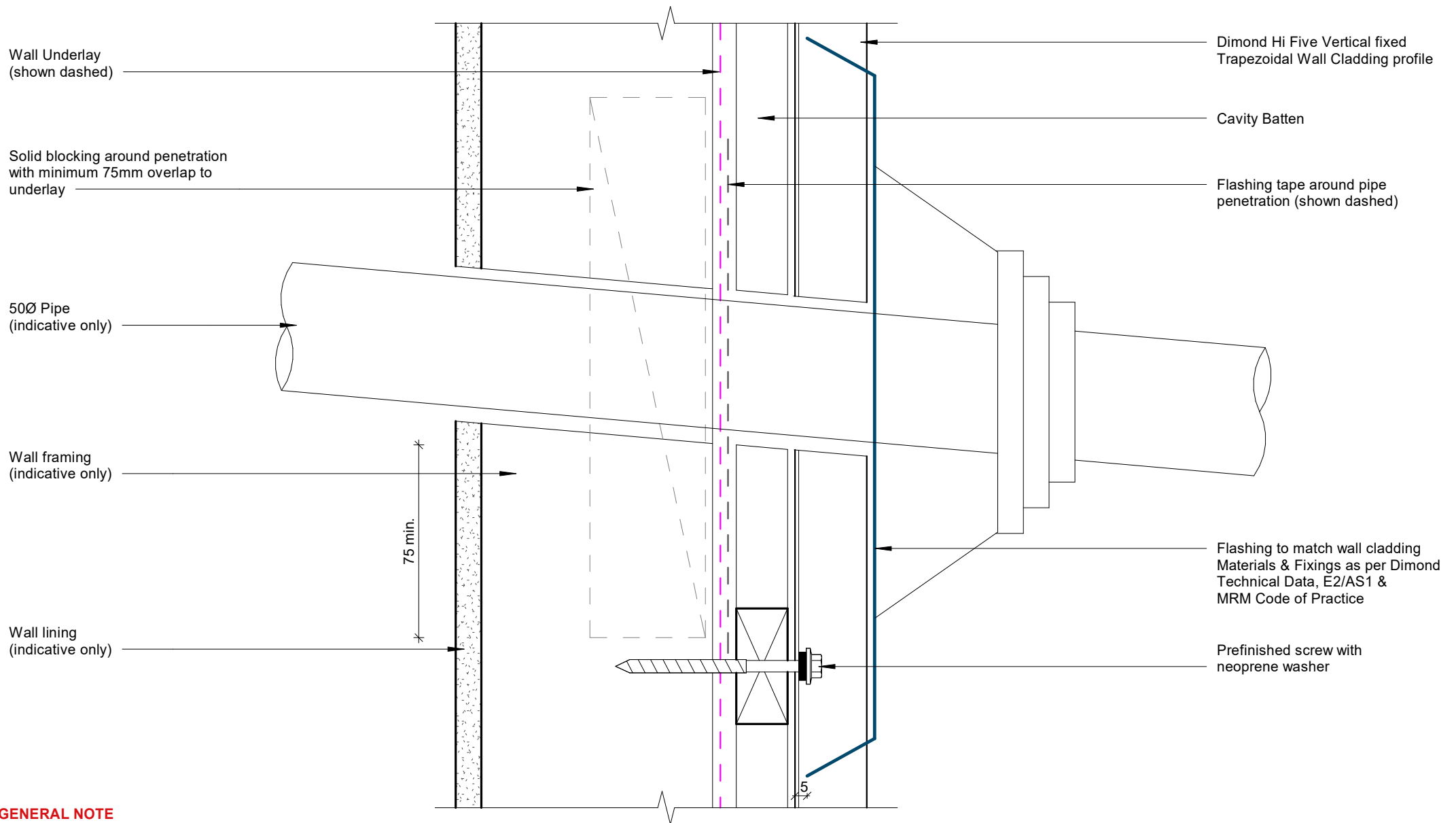
Rev: 1 Hi Five Residential Vertical Cladding



#### GENERAL NOTE

Cavity battens or timber framing that contain copper must be separated from steel cladding by a strip of wall or roof underlay or DPC.

## Meterbox Sill Detail

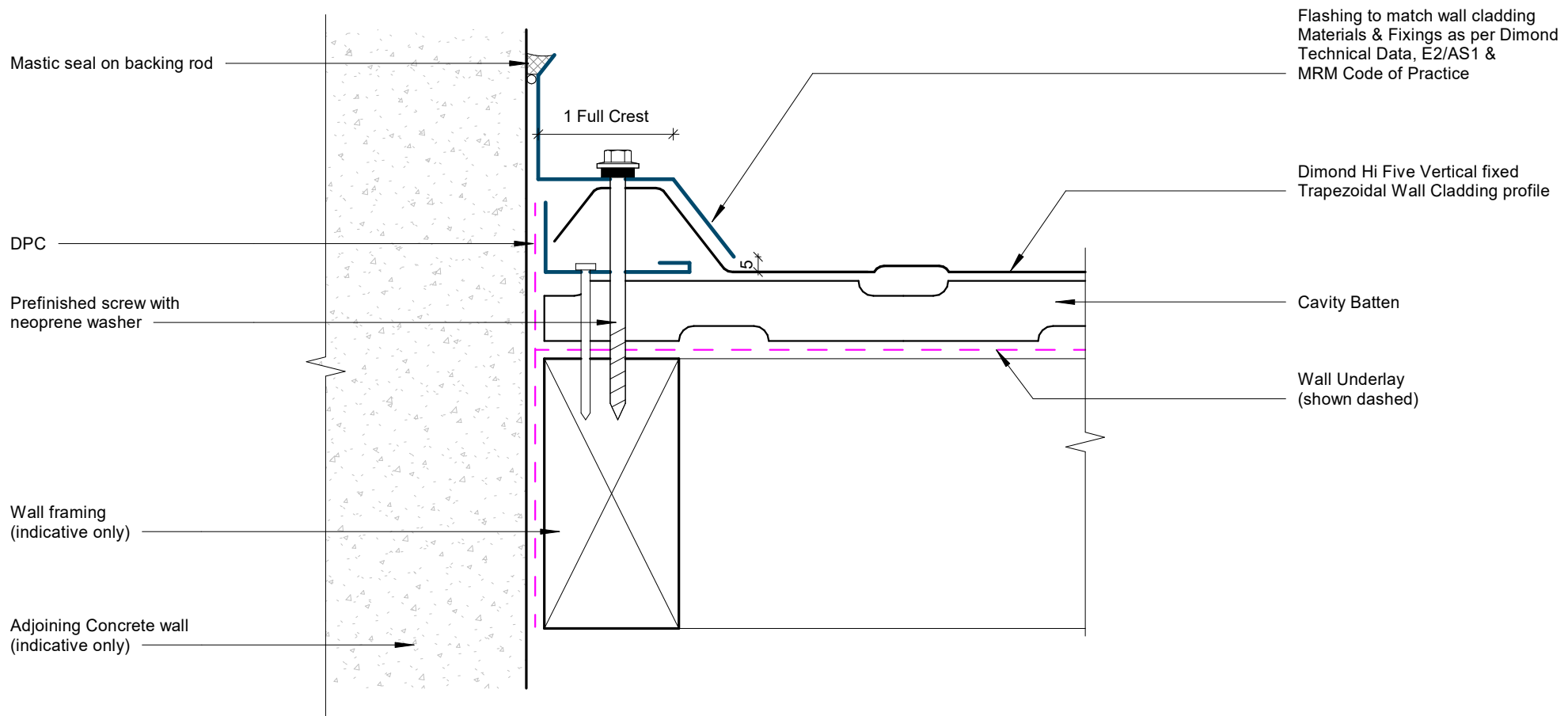


#### GENERAL NOTE

Cavity battens or timber framing that contain copper must be separated from steel cladding by a strip of wall or roof underlay or DPC.

## Pipe Penetration Detail





#### GENERAL NOTE

Cavity battens or timber framing that contain copper must be separated from steel cladding by a strip of wall or roof underlay or DPC.

## Cladding to Concrete Junction Detail

Adjoining Brick veneer on cavity  
(indicative only)

Mastic seal on backing rod

Rawplug

Prefinished screw

Wall framing  
(indicative only)

1 Full Crest

Flashing to match wall cladding  
Materials & Fixings as per Dimond  
Technical Data, E2/AS1 &  
MRM Code of Practice

Dimond Hi Five Vertical fixed  
Trapezoidal Wall Cladding profile

Cavity Batten

Wall Underlay  
(shown dashed)

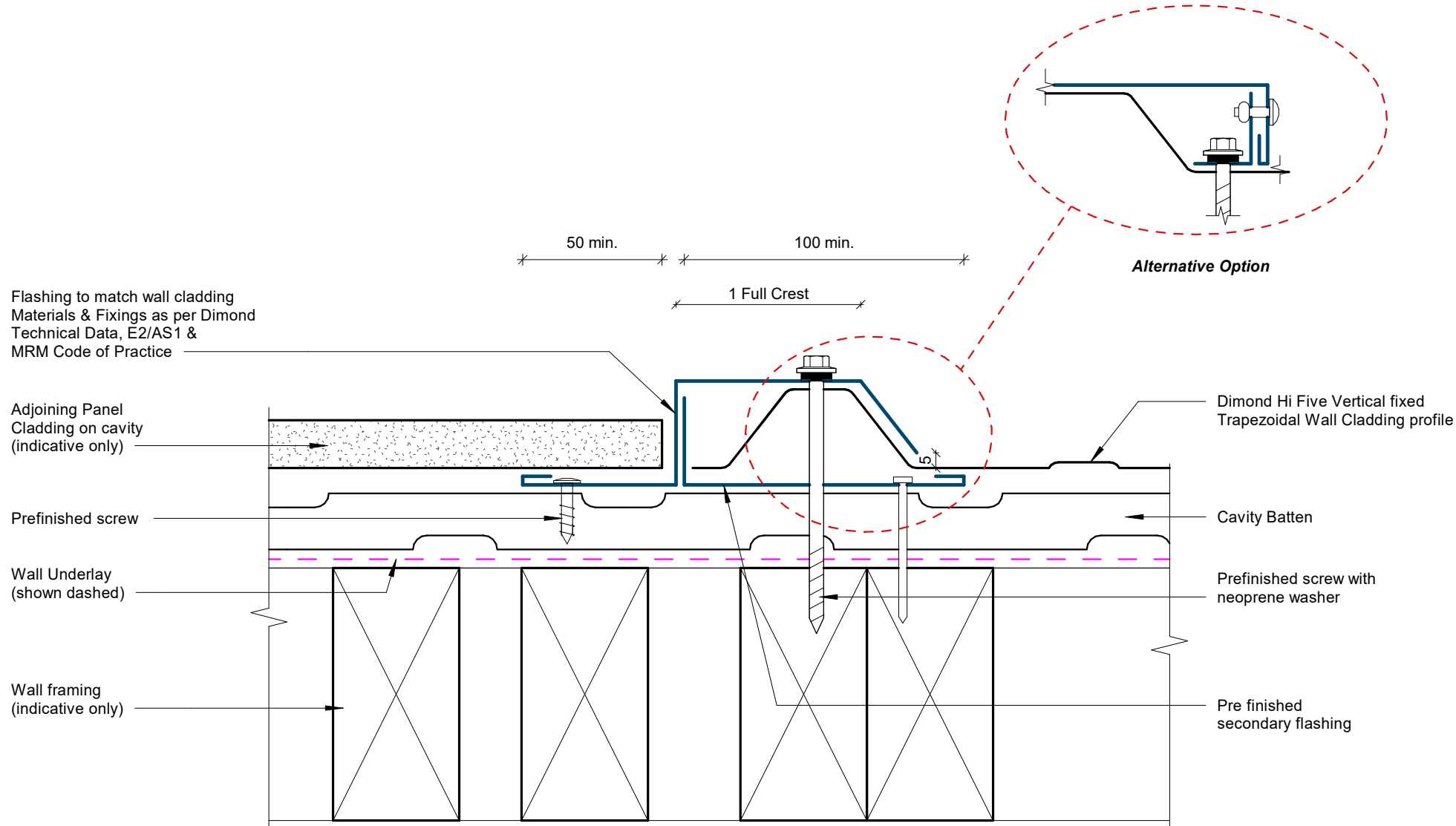
Prefinished screw with  
neoprene washer

## GENERAL NOTE

Cavity battens or timber framing that contain copper must be separated from steel cladding by a strip of wall or roof underlay or DPC.

# Cladding to Brick Junction Detail

Rev: 1 Hi Five Residential Vertical Cladding



#### GENERAL NOTE

Cavity battens or timber framing that contain copper must be separated from steel cladding by a strip of wall or roof underlay or DPC.

## Cladding to Panel Junction Detail

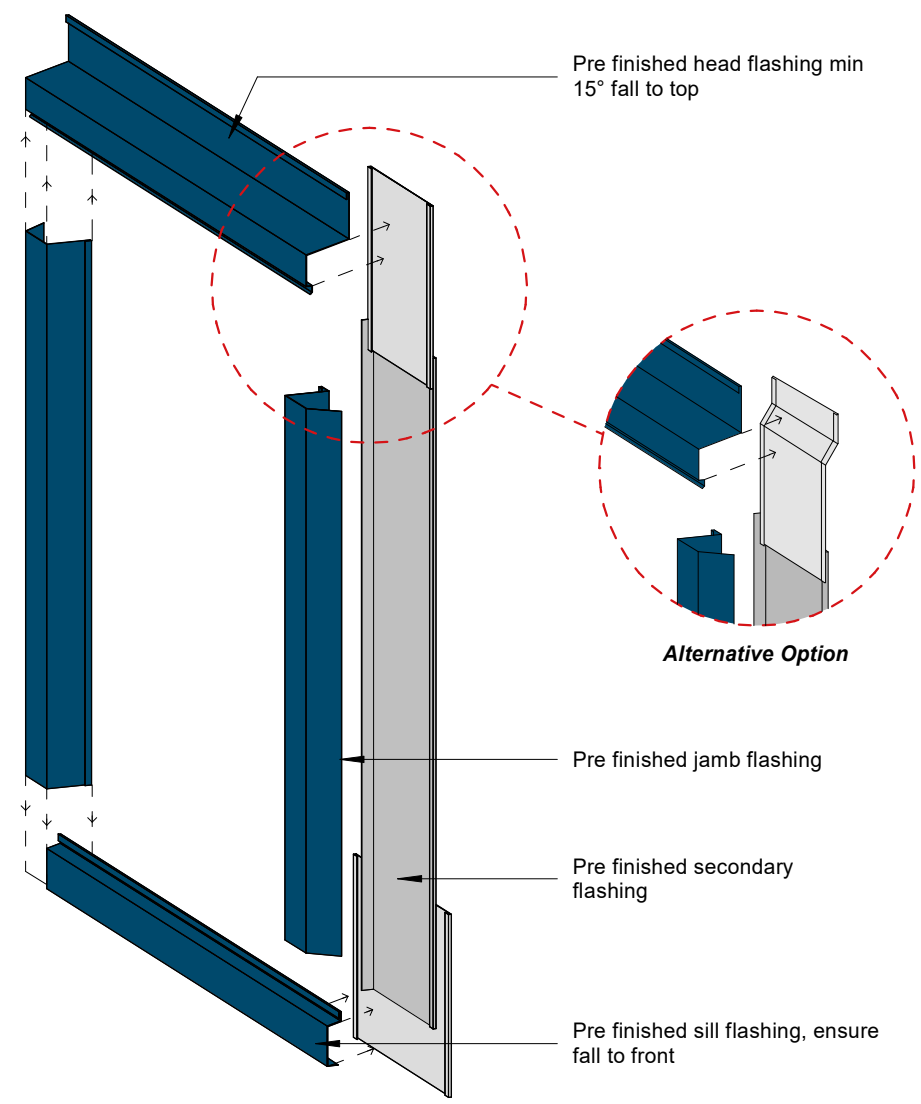
Dimond Hi Five Vertical fixed Trapezoidal Wall Cladding profile

Aluminium joinery frame (indicative only)

**GENERAL NOTE**

Cavity battens or timber framing that contain copper must be separated from steel cladding by a strip of wall or roof underlay or DPC.

Flashing to match wall cladding  
Materials & Fixings as per Dimond Technical Data, E2/AS1 & MRM Code of Practice



# 3D Window Flashing Detail